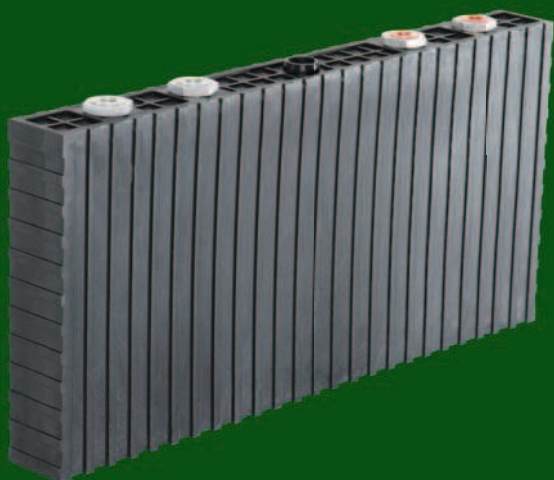
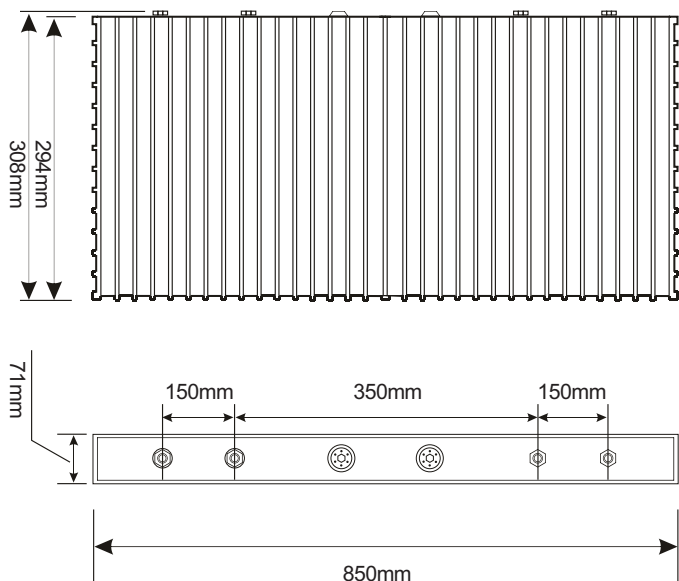


## 中聚锂电池性能说明 SINOPOLY LITHIUM ION BATTERY SPECIFICATIONS

### 单体电池尺寸 DIMENSIONS



型号(MODEL):SP-LFP1000AHA



### 技术参数 SPECIFICATION

型号(MODEL):SP-LFP1000AHA

标称容量 Nominal Capacity	1000Ah,3200Wh	
标称电压 Nominal Voltage	3.2V	
循环寿命 Life Cycles	80% DOD	≥2000Times
	70% DOD	≥3000Times
自放电率 Self-discharge Rate	≤3%	
重量 Weight	32±0.3kg	

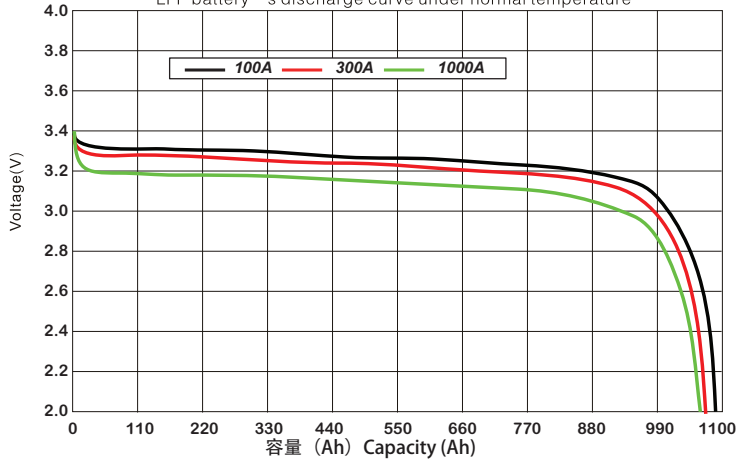
	充电 Charge (模式 Mode:cc-cv)	放电 Discharge
截止电压 Cut-Off Voltage	3.8V	2.8V
标准电流 Standard Current	0.3C,300A	0.3C,300A
最大恒电流 Max Constant Current	3C,3000A	3C,3000A
最大脉冲电流(10秒) Max Impulse Current (10s)	3C,3000A	5C,5000A
工作温度 Operating Temperature	0°C ~ +70°C	-20°C ~ +70°C

# SP-LFP1000AHA型电池的充放电特性

## SP-LFP1000AHA CHARGE & DISCHARGE CHART

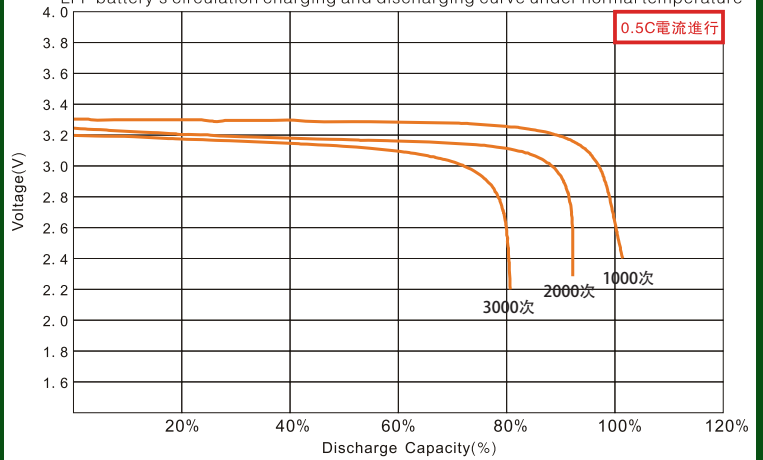
常温下 LFP类电池的放电特性曲线

LFP battery's discharge curve under normal temperature



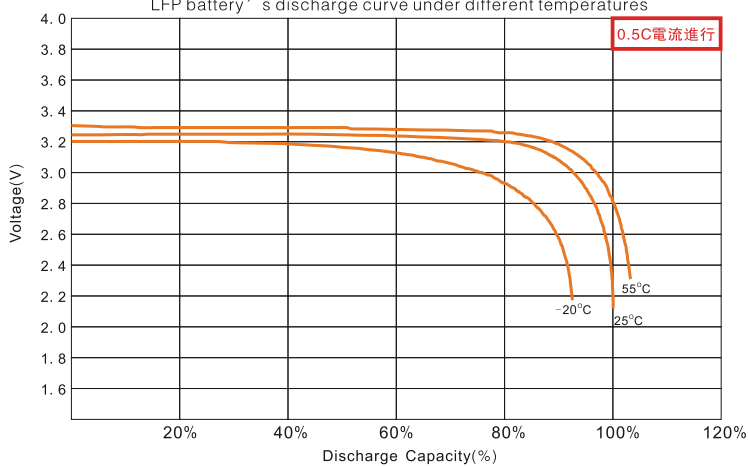
常温下 LFP类电池的循环充放电特性曲线

LFP battery's circulation charging and discharging curve under normal temperature



不同环境温度下 LFP类电池的放电特性曲线

LFP battery's discharge curve under different temperatures



在常温环境下 LFP类电池的存储特性曲线

LFP battery's storage characteristic curve in normal temperature

