



Power Brick Solid State

Lithium-Ion battery

Smart



24V Solid-State battery pack - LiFePO₄ - 120Ah - 3.07kWh

- **High lifespan: 4500 cycles** and more (see chart)
- **New Solid-State cell technology** for better performance and safety
- **Active Balancing** for fast, efficient cell voltage equalization
- **Remote monitoring by Bluetooth** (SOC, cell voltage, SOH, etc.)
- **Fast recharge** in less than one hour
- **Ultra safe Solid-State Lithium Iron Phosphate** chemistry (no thermal run-away, no fire or explosion risks)
- **Embedded BMS** (Battery Management System) : **improve lifespan and safety of the battery**
- **Strict cell matching** for pack consistency. Laser cell welding
- **Precharge system** for high capacitance loads
- **No Lead, no rare earths, no acid, no degassing**
- **Calendar life > 10 years**
- Excellent **temperature** robustness (-20 °C up to +60 °C)
- **Flexible** deployment : up to 16 packs in parallel
- **Constant power** during discharge (very low internal resistance)
- **Very low Peukert's losses** (energy efficiency >98 %)
- **Very low self discharge** (<3 % per month)
- **Deep discharge** allowed up to 100 %
- **No memory effect**
- About **50 % lighter** and **40% smaller** than equivalent Lead-AGM battery with same usable energy
- **Certification : CE, RoHS, UN 38.3, Cell : IEC 62619**

Technical Specifications

| | | |
|--------------------|--|---|
| Electric | Nominal voltage / Nominal capacity | 25.6 V / 120Ah |
| | Stored energy | 3072 Wh |
| | Volumetric energy density / Specific energy | 137.0 Wh/L / 146.3 Wh/Kg |
| | Internal resistance | ≤ 10mΩ |
| | Cycles | > 4500 cycles (see chart) |
| | Self discharge | < 3% per month |
| | Energy efficiency | > 98% |
| Standard Charge | Charge voltage | 28.8 V ± 0.4 V (Optional floating voltage : 26.72V max) |
| | Charge mode | CC/CV : Constant Current / Constant Voltage |
| | Continuous charge current / Maximum charge current | 130A / 150A |
| | BMS charge cut-off voltage | 29.6 V ± 0.1V |
| Standard Discharge | Instant peak discharge current | 800A (300 ms) |
| | Continuous discharge current | 130A |
| | Maximum discharge current (< 30s) | 170A |
| | BMS discharge cut-off voltage | 20V |
| Environment | Charge temperature range | 0°C to +55°C |
| | Discharge temperature range | -20°C to 60°C |
| | Storage conditions | 0°C to +50°C @60±25% relative humidity |
| | IP protection level | IP65 |
| Mechanical | Type of cells | Solid-State LiFePO ₄ cells |
| | Casing material | ABS |
| | Dimensions | 505x185x242 mm |
| | Weight | 21.0 kg |
| | Terminal | M8 |

 **Solid-State Technology**

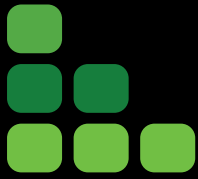
 **Active Balancing**

 **BlueTooth**

APPLICATIONS :

-  **Electrical vehicles and utilities**
-  **Industrial carts and forklifts**
-  **Marine applications**
-  **Street lightning**
-  **CCTV and security camera**
-  **Robotics and AGVs**
-  **Solar and wind energy storage**

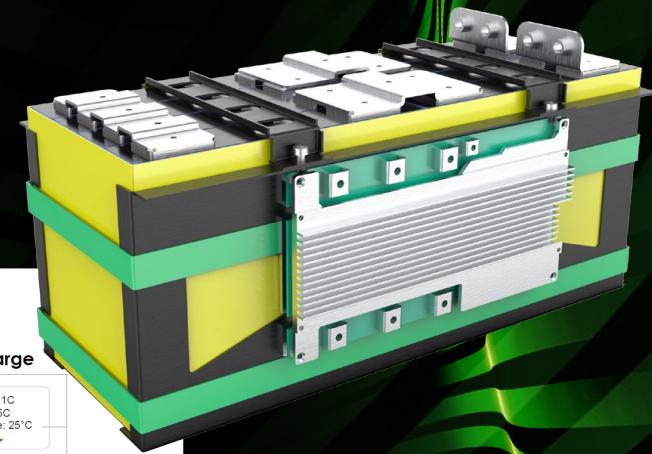
and much more...



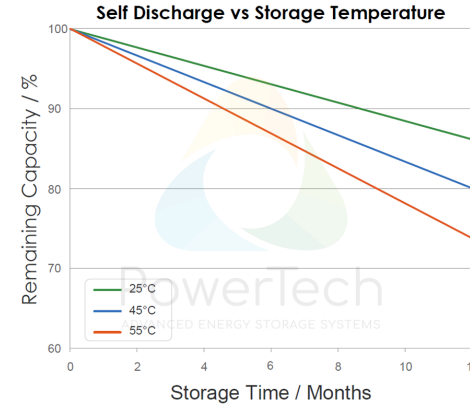
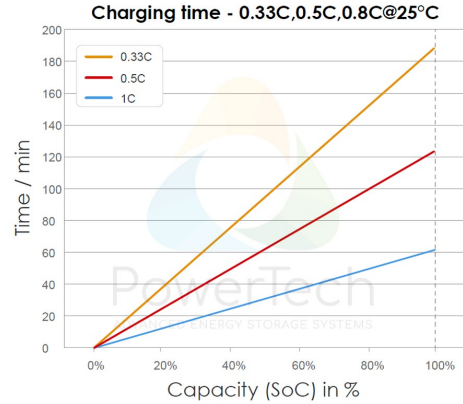
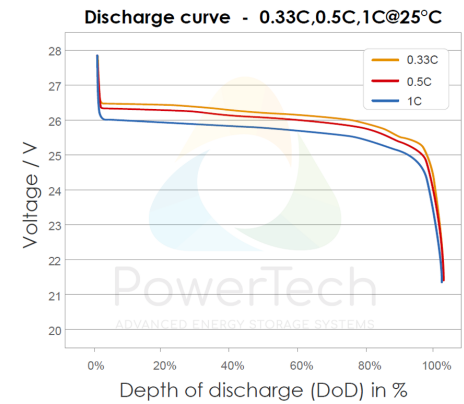
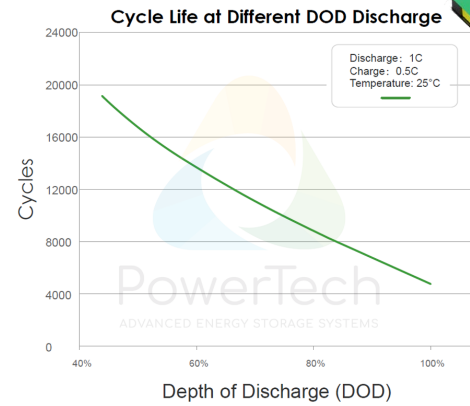
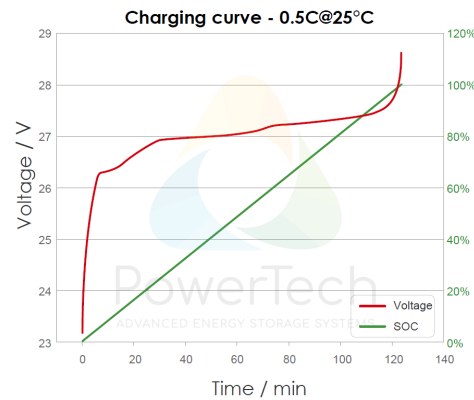
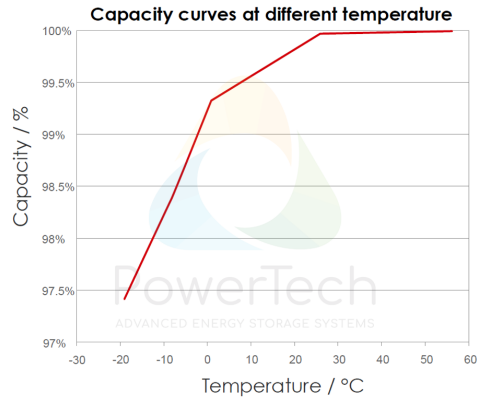
PowerBrick Solid State

Lithium-Ion battery

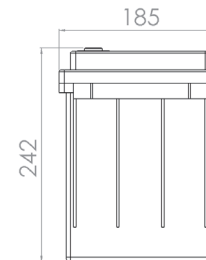
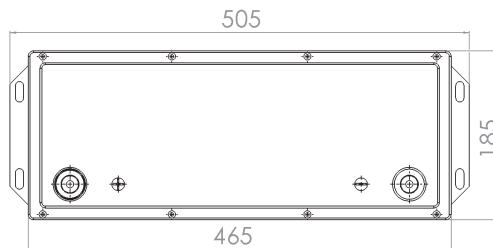
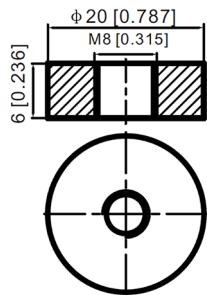
Smart



Charts and curves



Dimensions



Solid-State Technology

Active Balancing

BlueTooth



PowerTech
systems

V1.5

PowerTech Systems SAS
ZA Charles Renard - Batiment A1
6 Bld Georges Guynemer
78210 ST CYR L'ECOLE - France

SAS au capital de 1 000 000 Euros
SIREN : 793926577 - TVA : FR33793926577

www.powertechsystems.eu
+33 185 400 970
contact@powertechsystems.eu